

6. What does God allow us to see on that terrible day of destruction? (Malachi 3:18)

**Miracles**      **The difference between good and evil**      **Clouds**

7. What does God say He will make after the destruction of the wicked? (Revelation 21:5)

**More sinners**      **Another planet**      **A garden**      **Everything new**



### My Prayer

Thank You, Jesus, for allowing evil and sickness and death to destroy themselves in the fires. I know I'll be safe by Your side until the last flame dies. I love You, Jesus. Amen.



### Library

- "The Lord God says: As surely as I live, this is true. I do not want a wicked person to die. I want him to stop doing evil and live" (Ezekiel 33:11).
- "There is a day coming that will be like a hot furnace. All the proud and evil people will be like straw. On that day they will be completely burned up. Not a root or branch will be left," says the Lord of heaven's armies" (Malachi 4:1).
- "You will again see the difference between good and evil people. You will see the difference between those who serve God and those who don't" (Malachi 3:18).
- "Look! I am making everything new!" (Revelation 21:5).



### My Friend Ellen Wrote

"God has declared that sin must be destroyed as an evil [that hurts] the universe. Those who cling to sin will perish in its destruction" (Christ's Object Lessons, p. 123).

The fires don't come from an angry God. The fires are simply what happens when people choose to live without God's love and power protecting them. Now is the time to decide that you want to live forever in God's protecting arms. If you do, you never have to fear the fires.

## Bible Adventures for Young Readers

LESSON 27



## Into the Fire

### I Can Read Text

"[God] will wipe away every tear from their eyes. . . . All the old ways are gone." —Revelation 21:4

### My Story

"Be careful," Dad called as he raked up another large pile of dead leaves. "Don't get too close to the fire. I wouldn't want you to burn off your nose."

Emily laughed as the flames in the big backyard burn barrel turned her father's last load of leaves into smoking ashes. "I'd look pretty funny without my nose," she chuckled. "Just keep those leaves coming. We'll have the yard cleaned up by suppertime."

As Emily stood watching the leaves vanish in the fire, she thought about something Dad had read during family worship that morning. The Bible says that, right before God's people begin living forever with Jesus on the new earth, all evil will be destroyed. "It says the whole world will suddenly become like one great, big

lake of fire," Dad had told them. "Pain, suffering, and everything bad will vanish just like dried leaves in a fire."

Emily knew that God doesn't enjoy seeing anyone suffer or die—even bad people. But, like He told Adam and Eve, there are two paths to follow in your life. One path leads to heaven—and eternal life. The other path leads to that big, final fire—and eternal death. People decide which way they want to live. People decide what will happen to them in the end.

While the leaves burned, Emily began to smile just a little because some parts of that awful event sounded exciting to her. Those fires will do a whole lot more than burn up those who refuse to walk on God's path. They will also destroy all the results of sin. That was a happy thought!

Emily picked up a wrinkled oak leaf. "You are all the diseases in the world," she told it. Then she tossed it into the burn barrel. Puff. It vanished!

Grabbing another leaf, she said, "You are fear." Into the fire it went. Puff. Gone!

Hey, this is great, Emily thought. "You are lying and cheating," she told the next leaf. Puff. Vanished!

"You are pain, hurt, and worry," she told another. Puff!

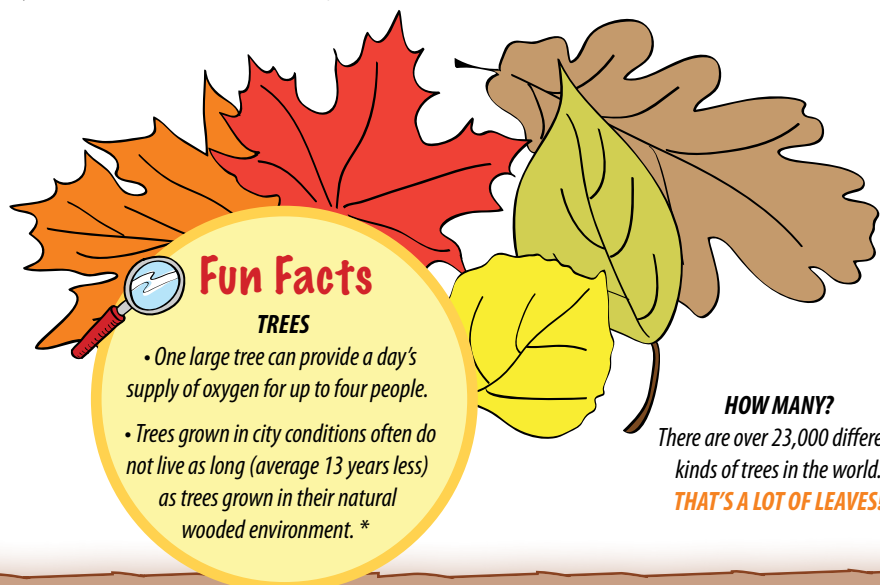
Taking hold of a very large leaf, she announced loudly, "You ... are ... death!" It disappeared in a sizzling burst of fire and smoke.

"Why are you burning our leaves one at a time?" Dad called.

Emily smiled. "Oh, I'm just thinking about something that's going to happen someday. I'm thinking about when God will make sin go away forever. Like the leaves in our burn barrel, everything evil will be burned up completely."

Pointing, she called out. "Hey, Dad, bring me that big pile of leaves over there, please. I'm going to make sure that they never litter our yard again."

What would you like to throw into the fire? Write in the leaves what you want to see vanish from this world forever. Maybe you'd like fear to go away. Perhaps mean people or sickness would be what you'd choose. Write it in the leaves and then draw red and yellow fire flames burning them up!



How we live, and the choices we make each day, shows which path we're on. God's path leads to heaven and eternal life. Satan's path leads to the fires of eternal destruction.

Draw a line from the actions below to the correct path.

**GOD'S PATH**

**SATAN'S PATH**

Being kind to people and animals  
Always trying to get people in trouble

Cheating on a test

Forgiving a friend who has hurt you

Sharing what you have with others

Saying unkind things about people

Lying

Hurting your body with unhealthy foods

Healing your body with healthful foods

Asking God to forgive your mistakes

Pretending that you don't make mistakes

Helping others

Ignoring others

Praying

Sharing

Hating

**YOU**

Circle whose path you choose.

I'm going to live my life walking on **GOD'S** **SATAN'S** path.

Look up the texts in the **LIBRARY** and then choose the correct answer to the questions below.

1. How does God feel when a wicked person dies? (Ezekiel 33:11)

**HAPPY**

**ANGRY**

**DOES NOT  
WANT IT TO HAPPEN**

**SATISFIED**

2. What will the destruction be like? (Malachi 4:1)

**HOT FURNACE**

**MATCH FLAME**

**BOILING WATER**

**SUMMER SUN**

3. Who will be like straw in the destruction? (Malachi 4:1)

**MISSIONARIES**

**CHILDREN**

**SOLDIERS**

**PROUD AND EVIL PEOPLE**

4. What will happen to evil people as the fires burn? (Malachi 4:1)

**SUFFER FOREVER**

**COMPLETELY BURNED UP**

**RUN AND HIDE**

**PRAY**

5. What is left of sin and sinners after the fires burn? (Malachi 4:1)

**NOTHING**

**HALF**

**MANY**

**A FEW**

**ALL**